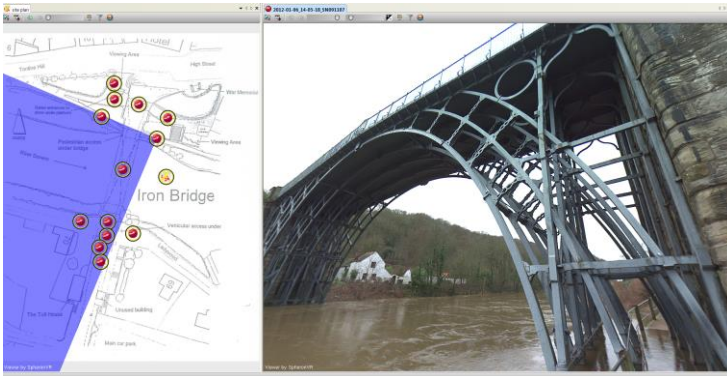


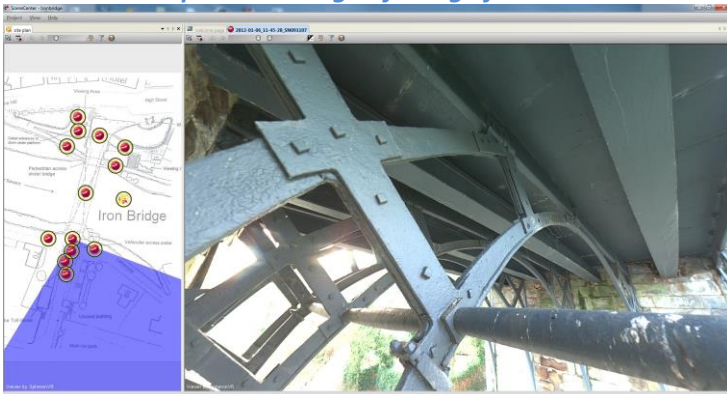


Bridge Inspection Surveys

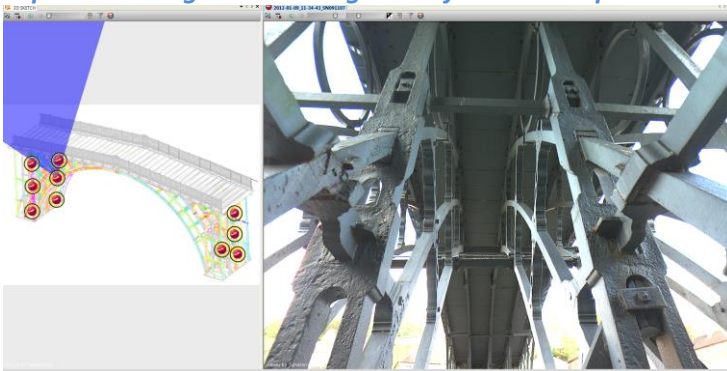
geosphere4d is a technology led geospatial company specialising in the use of leading edge measurement and imaging technology. We deliver professional bespoke 3D and 4D geospatial and documentation services within a broad range of Architecture, Engineering and Construction market areas for private and public sector clients.



Spherical image of bridge facade



Spherical image under bridge deck from telescopic mast



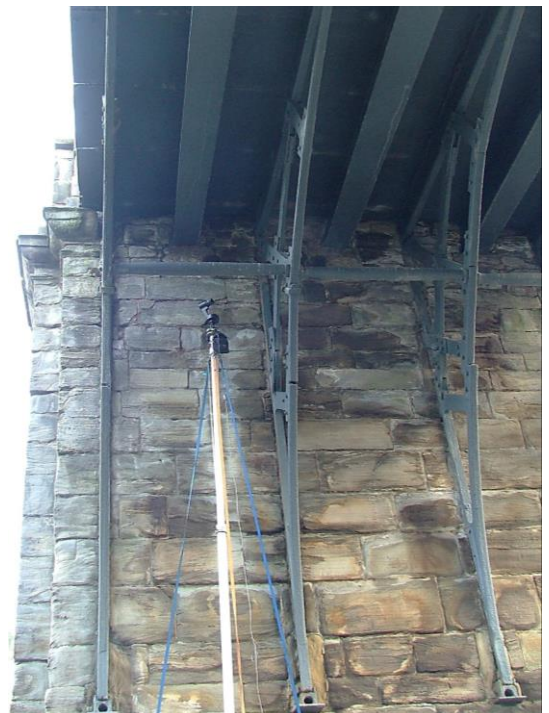
Spherical image of bridge girder work with 3D Model

Bridges Inspection Surveys utilises a spherical camera with High Dynamic Range (HDR) capability. The HDR functionality together with the cameras illumination system allows for imagery to be collected in the darkest areas of a bridge structure. A telescopic mast is used to access all areas of a bridge structure.

The spherical imagery is published into a viewer application enabling users to navigate within the spherical imagery and interact with the HDR settings to generate the optimum lighting conditions for any area of the image.

Spherical HDR imagery can provide:

- Site replication to minimise site visits
- Health & Safety site review
- Asset Management
- Condition Assessment & inspection
- Facilities Management
- Direct measurement capability



Spherical camera on telescopic mast

Measurements can also be taken directly within the imagery ensuring that critical measurements can be checked

The spherical imagery is published into a Visual Site Management database into which additional documentation and imagery can be embedded

Contact us

Email: enquiry@geosphere4d.com

Phone: 01903 742 222

